

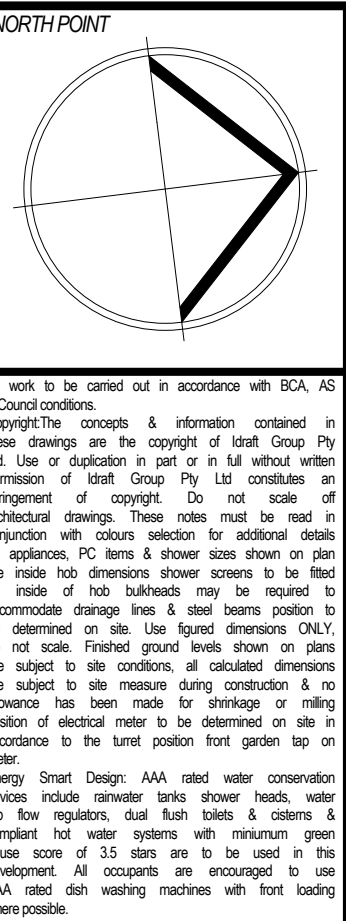
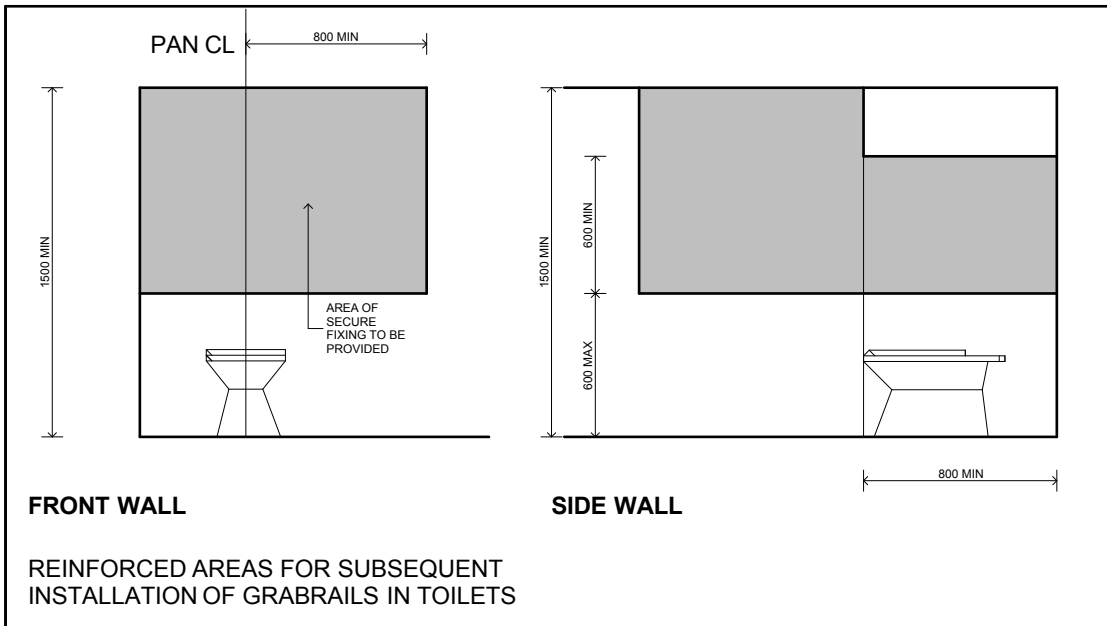
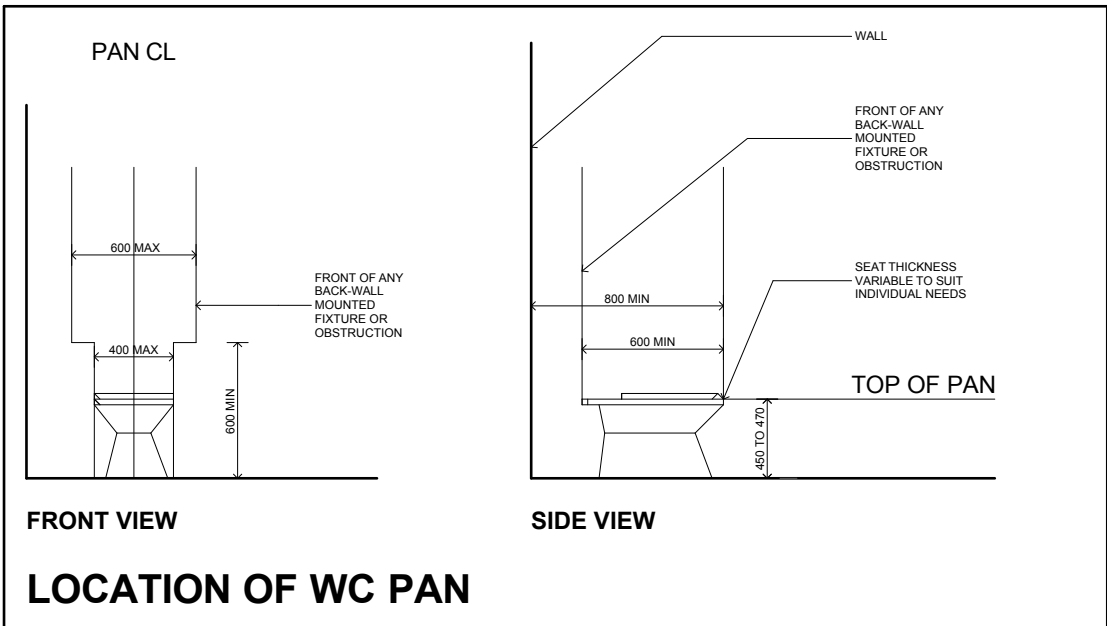
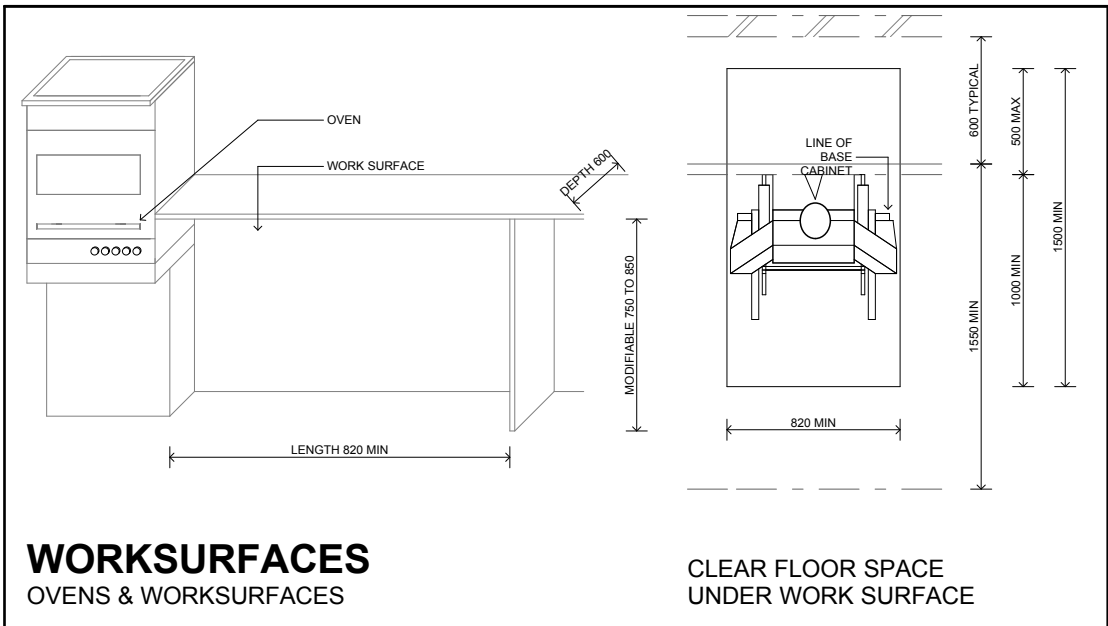
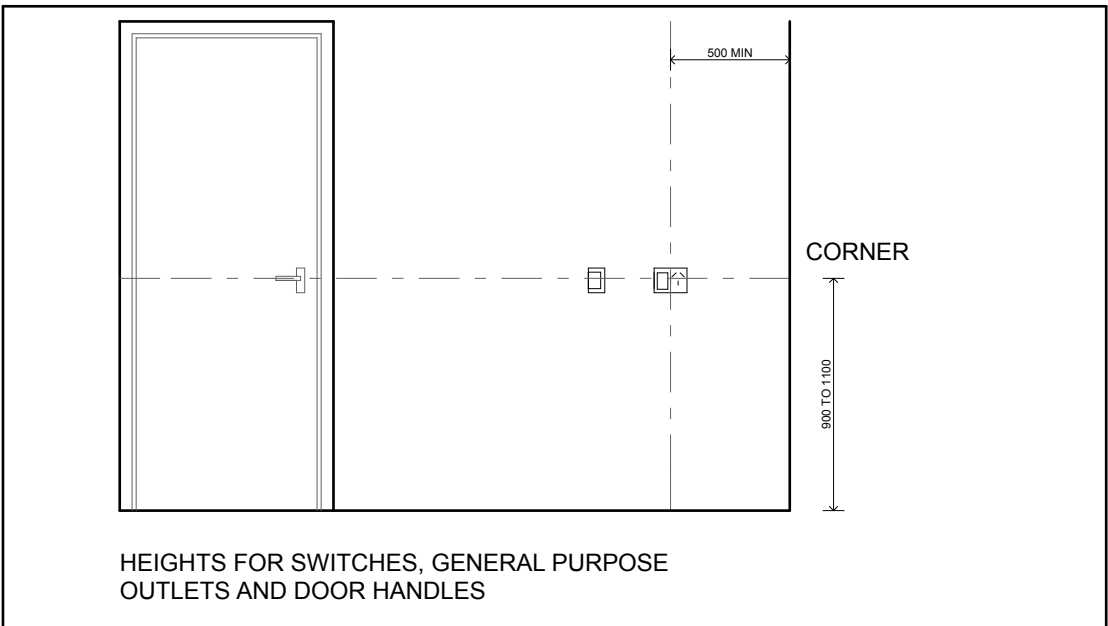
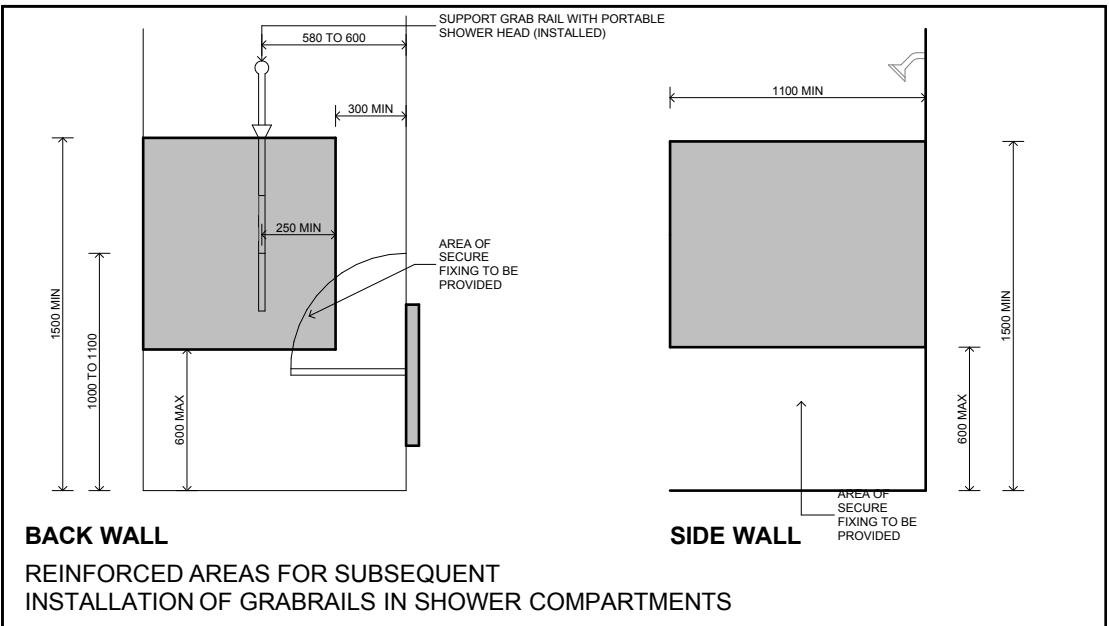
All essential features incorporated.


DRAWINGS		CLAUSE
1	Provision of drawings showing the housing unit in its pre-adaption and post-adaption stages	2.3
	SITING	
3	A continuous accessible path of travel from street frontage and vehicle parking to entry complying with AS1428.1	3.3.2
	LETTERBOXES IN ESTATE DEVELOPMENTS	
11	Letterboxes to be on hard standing area connected to accessible pathway	3.8
	PRIVATE CAR ACCOMMODATION	
14	Carparking space or garage min. area 6.0m x 3.8m	3.7.2
	ACCESSIBLE ENTRY	
20	Accessible entry	4.3.1
22	Accessible entry to be level (i.e. max. 1:40 slope)	4.3.2
23	Threshold to be low-level	4.3.2
24	Landing to enable wheelchair manoeuvrability	4.3.2
25	Accessible entry door to have 850mm min clearance	4.3.1
27	Door lever handles and hardware to AS 1428.1	4.3.4
	INTERIOR GENERAL	
32	Internal doors to have 820 mm min clearance	4.3.3
33	Internal corridors min. width of 1000mm	4.3.7
34	Provision for compliance with AS 1428.1 for door approaches	4.3.7
	LIVING ROOM & DINING ROOM	
36	Provision for circulation space of min 2250mm diameter	4.7.1
38	Telephone adjacent to GPO	4.7.4
41	Potential illumination level min 300 lux	4.10
	KITCHEN	
42	Minimum width 2.7m (1550mm clear between benches)	4.5.2
43	Provision for circulation at doors to comply with AS 1428.1	4.5.1
44	Provision for benches planned to include at least one work surface of 800mm length, adjustable in height from 750mm to 850mm or replaceable. refer to Figure 4.8	4.5.5
45	Refrigerator adjacent to work surface	4.5.5
46	Kitchen sink adjustable to heights from 750mm to 850mm or replaceable	4.5.6
47	Kitchen sink bowl max 150mm deep	4.5.6
48	Tap set capstan or lever handles or lever mixer	4.5.6 (e)
49	Tap set located within 300mm of front of sink	4.5.6 (e)
51	Cooktops to include either front or side controls with raised cross bars	4.5.7
52	Cooktops to include isolation switch	4.5.7
53	Work surface min 800mm length adjacent to cooktop at same height	4.5.7
54	Oven located adjacent to an adjustable height or replaceable work surface	4.5.8
59	GPOs to comply with AS 1428.1. At least one double GPO with 300mm of front of work surface	4.5.11
60	GPO for refrigerator to be easily reachable when the refrigerator is in its operating position	4.5.11
61	Slip-resistant floor surface	4.5.4
	MAIN BEDROOM	
62	At least one bedroom of area sufficient to accommodate queen size bed and wardrobe and circulation space requirements of AS 1428.2	4.6.1
	BATHROOM	
75	Provision for bathroom area to comply with AS 1428.1	4.4.1
76	Slip-resistant floor surface	4.4.2
77	Shower recess - no hob. Minimum size 1160 x 1100 to comply with AS 1428.1.	4.4.4 (f)
78	Shower area waterproofed to AS 3740 with floor to fall to waste	4.4.4 (f)
79	Recessed soap holder	4.4.4 (f)
80	Shower taps positioned for easy reach to access side of shower sliding track	4.4.4 (f)
82	Provision for adjustable, detachable hand held shower rose mounted on a slider grabrail or fixed hook (plumbing and wall-strengthening provision)	4.4.4 (h)
83	Provision for grabrail in shower to comply with AS 1428.1	4.4.4 (h)
86	Tap sets to be capstan or lever handles with single outlet	4.4.4 (c)
88	Provision for washbasin with clearance to comply with AS 1428.1	4.4.4 (g)
90	Double GPO beside mirror	4.4.4 (d)
	TOILET	
92	Provision of either 'visible toilet' or accessible toilet	4.4.3
93	Provision to comply with AS 1428.1	4.4.1
94	Location of WC pan at correct distance from fixed walls	4.4.3
95	Provision for grab rail zone.	4.4.4 (h)
96	Slip resistant floor surface (Vitreous tiles or similar).	4.4.2
	LAUNDRY	
98	Circulation at doors to comply with AS 1428.1	4.8
99	Provision for adequate circulation space in front of or beside appliances (min 1550 mm depth)	4.8
100	Provision for automatic washing machine	4.8 (e)
102	Where clothes line is provided an accessible path of travel to this	4.8 (a)
105	Double GPO	4.8 (g)
108	Slip-resistant floor surface	4.9.1
	DOOR LOCKS	
110	Door hardware operable with one hand, located 900-1100mm above floor.	4.3.

ADAPTABLE UNITS PROVIDED 10% - 3 UNITS (UNIT 01, UNIT 02, UNIT 05)



LEVEL 4
Area: 176 m2

[illegible]

223-25 Charles Street, Liverpool	
	Nominated Architect Adrian Wilton NSW Architects Registration Board 5347 (02 9641 9581) www.idraft.com.au PO Box 427, Merrylands NSW 2160
	project: Demolition & construction of a eight (8) storey Residential development containing 23 units under ARHSEPP
	client: Hume Community Housing
	council: Liverpool City Council
	drawing title: Adaptation Details Typical L4 - L6
	designed + drawn: M.Trinh & P.Revollar
	Issue/Stage: DA - ISSUE A
	paper/scale: A2/1:100
	date: 10/12/2020
job #: 28705	dwg #: 4003